



NATIONAL MODEL FOR  
NEW APPROACH TO  
YOUTH DEVELOPMENT

**OVERVIEW**

# CONTENTS

|          |                                |           |
|----------|--------------------------------|-----------|
| <b>1</b> | <b>THE FOUNDATION</b>          | <b>1</b>  |
| <b>2</b> | <b>OUR MISSION</b>             | <b>2</b>  |
| <b>3</b> | <b>OUR SUPPORTERS</b>          | <b>3</b>  |
| <b>4</b> | <b>OUR BUILDING</b>            | <b>5</b>  |
| <b>5</b> | <b>OUR PROGRAMS</b>            | <b>7</b>  |
| <b>6</b> | <b>FUNDING AND FUNDRAISING</b> | <b>11</b> |
| <b>7</b> | <b>FOUNDATION STRUCTURE</b>    | <b>14</b> |
| <b>8</b> | <b>CONTACT</b>                 | <b>15</b> |



# THE FOUNDATION

## THE DUNN AND LEWIS YOUTH DEVELOPMENT FOUNDATION

---

**This is a “National Model” for new approach to youth development. A template to replicate in other regional centres around Australia. We have already raised \$1.5m, secured the land and have the initial slab laid. Quick delivery of outcomes and programs.**

The Dunn and Lewis Youth Development Foundation is a youth and community support organisation created to serve the fast-growing NSW South Coast and surrounding regions.

The Foundation was established in 2003 by Ulladulla’s Gayle Dunn as a consequence of the death of her son Craig Dunn, his friend Danny Lewis and 86 other Australians in the Bali bombings of October 2002.

The Foundation is building a multi-purpose youth facility at Ulladulla of world-class standard which will become self-funding, making it unique in Australia, a model to replicate in other regional centres.

The Foundation is seeking financial support to continue it’s building program.

Gayle Dunn’s vision for nurturing local young people and her practical approach and leadership have inspired a rising groundswell of support from the local community, friends and organisations across the region, the state and other parts of Australia.

Gayle Dunn and her supporters are steadily turning their dream of building the Dunn and Lewis Memorial Youth Entertainment Complex into reality. Local youth were consulted on their most pressing needs and how the Complex could be designed to meet those needs.

The outcome is a unique facility and a breakthrough approach to youth well-being in the region.

The job is under way and your support will help bring it to completion.

This is their story so far.

---

*“I encourage all those touched by this tragedy to contribute to the centre’s fundraising efforts to help give effect to this vision”*

John Howard, Former Prime Minister of Australia

*“The NSW Government is proud to support this initiative and looks forward to the realisation of this much-needed facility for the young people of the region.”*

The Hon Tony Kelly MLC, Minister for Lands

*“I have no hesitation in supporting the proposal to build the Dunn and Lewis Memorial Centre, a tribute to the wonderful potential of all our young people, and will work tirelessly to assist this project in any way I can.”*

Joanna Gash MP (Mrs), Federal Member for Gilmore

Gayle was named “2008 South Coast Woman of the Year” for her community work.

# 2

## OUR MISSION

**TO PROVIDE ACCESS TO SERVICES AND CREATE NEW OPPORTUNITIES FOR ALL YOUTH TO LIVE THEIR BEST LIVES.**

### **PURPOSE OF THE DUNN AND LEWIS YOUTH DEVELOPMENT FOUNDATION**

- by Gayle Dunn

The Dunn & Lewis Youth Development Foundation has formed to fill a void that can become an overwhelming obstacle to many of today's young people.

The issues we confront here are not uncommon or special; in fact they are endemic in regional Australia. What help is there for young people who confront issues of trauma in their daily lives from violence, crime, personal tragedy, road accidents or isolation? Unemployment alone breeds indolence and feelings of worthlessness. The lack of community based activities, skill-learning programs and entertainment opportunities does nothing to get kids off binge drinking, drugs or address the overriding issues of boredom, lack of training, or constructive life guidance. This neglect fosters a downward spiral.

The Foundation emerged through youth and community consultation. After four years of negotiating, research, collecting data and engaging experts in all areas, we have started building a Youth Complex as the hub from which we will address these needs.

The brick and mortar structure is the starting point and our physical home. Our main mission is providing for the social well being and development of our youth.

For the young people are on the road to a healthy and successful life, this Complex will provide them with the facilities to excel and achieve the potential that already stirs within them. For those who are not on the road to a successful life the Foundation, which operates through the Complex, will provide them with so much more.

Conventional youth programs are having limited success in our region because they don't place young people equal or

ahead of their peers when they complete rehabilitation. It's proven fact that young people with some level of qualifications are much more likely to gain employment or have the confidence to continue with their education. This is a critical principle and is fundamental to the opportunities we plan to provide through the Complex.

Our not-for-profit Foundation intends to practice self-reliance as well as preach it.

We will use commercial activities at the Complex to fund the specialist youth-support programs that will be our main work. In the initial development phase, our Foundation is relying on community, business and government funding, donations and sponsorship to build the Complex and take it to the point where it can become self-funding for the long-term.

Two external reports have been completed on the project. The first one in 2004 conducted by KPMG as to factual findings on the building and operations, and a second report by Ernst and young in 2005 comparing the financial viability of the project, conducted for the Department of Transport and Regional Services.

### **SURVEYS**

A survey of community members, tourists and businesses was undertaken to determine the initial and ongoing demand for the Centre. Over 1600 surveys were completed, representing approximately 10% of the Ulladulla population, which were then analysed by Wollongong University. The results showed that 99.9% of the people surveyed support the Centre and that 92.2% of the respondents would use the Centre on a regular basis.

# 3

## OUR SUPPORTERS

### THE DUNN & LEWIS YOUTH DEVELOPMENT FOUNDATION LTD

---

#### BOARD/ DIRECTORS

---

|                                  |                                 |
|----------------------------------|---------------------------------|
| Kevin Whitford - Chairman        | ANZ Bank Manager                |
| Gayle Dunn - President & Founder | Small Business                  |
| Nigel Devenport                  | Bali Survivor                   |
| Greg Best                        | Deputy Principal Ulladulla High |
| Barry Penfold                    | Solicitor                       |
| Barry Hewish                     | Business                        |
| Peter Cosgrove                   | Public Company Director         |

#### FUNDRAISING COMMITTEE

---

|                       |                                                            |
|-----------------------|------------------------------------------------------------|
| Peter Cosgrove        | Managing Director Bannisters Point Lodge                   |
| Ian McHugh            | Director La Farge Plasterboard                             |
| Charles Edward Curran | Director Capital Investment                                |
| Arthur Rorris         | Secretary South Coast Labor Council                        |
| Mike Lattin           | CEO Globecast Australia                                    |
| Mark Skinner          | Chairman Campus Group                                      |
| Rob Belgiovane        | Director Williams Mackay                                   |
| Jo Boole              | Regional Manager Rural Press                               |
| Suzanne Hudson        | Director Marketing & Management Applied Knowledge Partners |
| Phillip Morphew       | Managing Director Executive Peak Performances              |
| Cheryll Olmos         | Associate 360HR                                            |

#### PROFESSIONAL ADVISORS

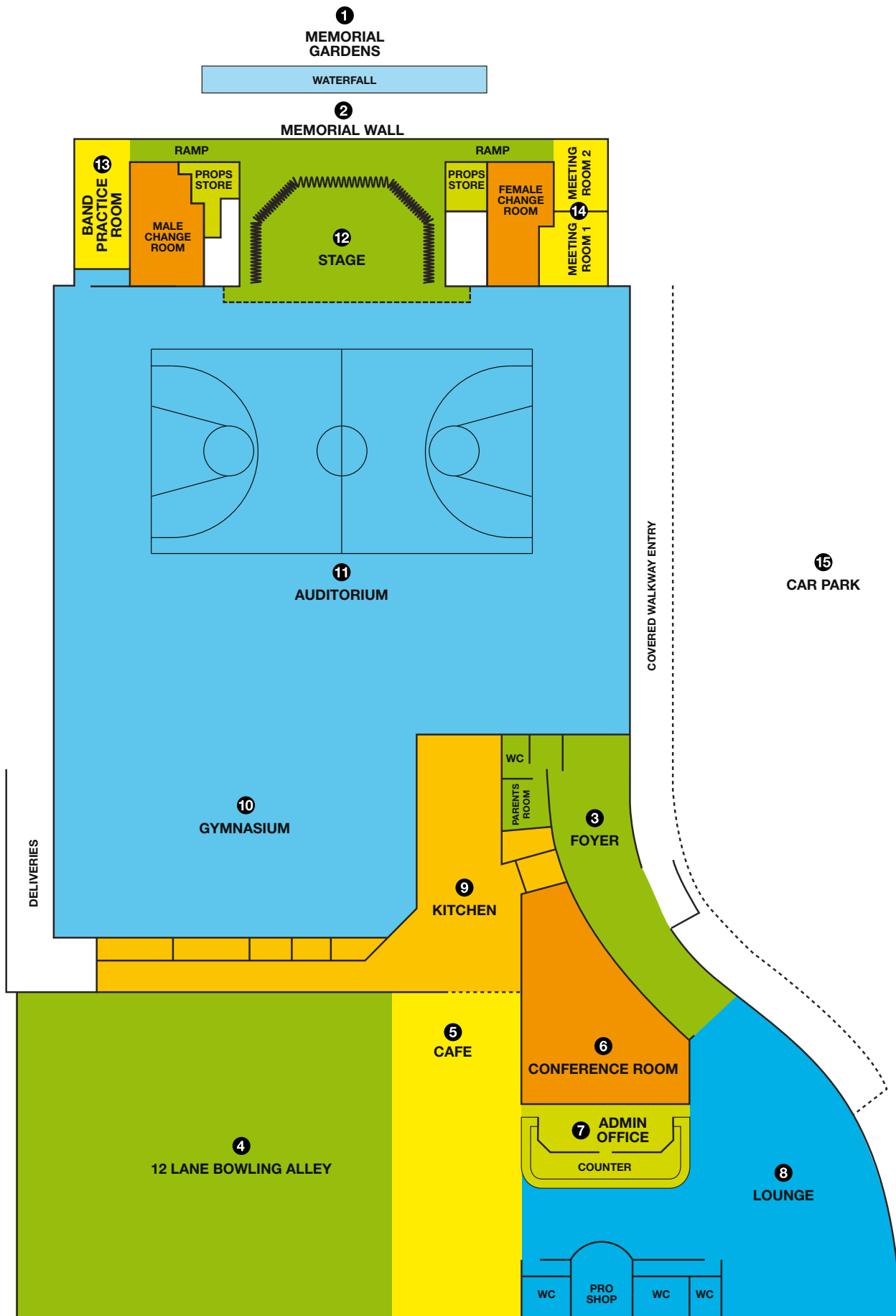
---

|               |                                        |
|---------------|----------------------------------------|
| Peter Cooke   | Solicitor - Kennedy & Cooke Solicitors |
| Bill Frazer   | Accountant                             |
| Paul Mulvey   | Engineer                               |
| Andrew Bell   | Architect                              |
| Greg Weatley  | Public Auditor                         |
| Wayne Hitches | Project Management Lend Lease          |
| Dick McLean   | Site Manager, Steg Developments        |
| Neil Riley    | Promotions & Advertising               |

#### AMBASSADOR

---

ANGRY ANDERSON



Dunn & Lewis Complex floor plan - corner St Vincent & Parson St, Ulladulla.

# 4

## OUR BUILDING

The complex design was directed by the young people of our community to blend in with our environment. It represents the waves and sand of the coastline.

- 1 MEMORIAL GARDENS;** a quiet place to sit and reflect, families who have lost a child may place their name in designated locations.
- 2 MEMORIAL WALL;** positioned behind the roof waterfall to remember the 202 innocent victims of the 2002 Bali Bombings.
- 3 FOYER;** marble and metallic finishes, water features and wall of hands that represent the many people that have helped in this project.
- 4 BOWLING ALLEY;** provides a social activity for individuals, teams, families and tourists, catering for any age and ability. The Bowling Alley will be run as a commercial business generating the main income to sustain the entire complex's operations. The Bowling Alley will provide employment and training for young people.
- 5 KIOSK/CAFE;** will serve light refreshments and provide employment and training for young people.
- 6 CONFERENCE ROOM;** will seat 120 people; it will provide a venue for functions, educational programs, conferences and meetings, group activities, training sessions, workshops and support group meetings. It has a kitchenette and is connected to the commercial kitchen. This room will have teleconferencing video link up facilities.
- 7 ADMINISTRATION;** this area will be used for the complex's management operations and provide a head office for The Dunn and Lewis Youth Development Foundation.
- 8 LOUNGE AREA;** has been designed to provide a free space where young people can meet, feel comfortable and socialize with other community members. On school mornings the lounge area will provide free nutritious breakfast. It will have a computer lab, internet access, music and flat screens. Run short courses like film making and facilitate screening nights, poetry and talent nights. It will become a casual meeting place for the community and tourists which is fully supervised at all times.
- 9 COMMERCIAL/TRAINING KITCHEN;** will be used for a culinary training school and TAFE students. We will also run cooking lessons and programs like teaching disadvantaged people to cook nutritious budget meals for the family, we will also store their meals labelled in freezers if required. The kitchen will cater for large events, functions and conferences providing an additional income stream – and skills training.
- 10 GYMNASIAC FACILITY;** a national facility that will host country championships, train gymnasts from toddler and soft play area which can be utilized by the disabled, to the elite. The sprung floor will also be used by mainstream sports, martial arts, circus programs, with foam pits for high ropes, rings and trampoline sports. A rock climbing wall is planned.
- 11 AUDITORIUM;** this is a multi functional area to provide activities for groups and teams and the capacity to host exhibition games that can be nationally broadcast, including: basketball, netball, soccer, badminton, volleyball, table tennis, and boxing. The entire floor will be sprung enabling a variety of commercial activities including dancing, ballroom and Latin American championships, physical culture and circus acts. Seating for 1500 + theatre style will attract conferences, exhibitions, bands, theatre restaurant, plays and international artists.
- 12 THE STAGE;** is a professional size with prop stores and dressing rooms interconnecting. This will cater for productions ranging from School Plays to Rock Bands.
- 13 THE BANDROOM;** is to be a soundproof band practice room, recording studio and teaching facility that interconnects with stage area.
- 14 TWO MEETING/CONSULTATION ROOMS;** for community use which also interconnect to the stage when required.
- 15 PARKING;** 70 controlled spaces in the basement and 140 external spaces. A bus drop off area, 3 bus parking bays will all be available on site. There will also be provision for heavy truck parking during functions.

## BUILDING STAGES AND TIMEFRAME

---

The Complex is scheduled to be delivered in three stages to allow operations to commence as soon as possible.

We are however, prepared and keen to accelerate this in line with the available funds. If all funds were in place we could complete all 3 stages of construction within 12 months.

Wayne Hitches from Land Lease is providing project management, bill of quantities and cost plan.

---

### Stage 1

The first stage of construction will culminate in the completion of the building perimeter and Bowling Alley installation, the western toilets, 65 external car parks and a kiosk. The lounge area will also be completed. We anticipate completion of Stage 1 building works by the end of 2009 if the current plan for progressive fundraising is maintained and enables the construction work to continue.

Cost of completion \$6m

---

### Stage 2

As soon as financially possible, we will open the auditorium and gymnasium to commence a wide variety of sports and health programs. We would also like to complete the commercial kitchen and function rooms to establish additional income streams in this stage. Completion anticipated by the end of 2010.

Cost of completion \$3m

---

### Stage 3

The current scope of work will be completed in this stage with the finalization of the entertainment stage, auditorium air-conditioning, band room, eastern toilets, basement works, external landscaping and the balance of car parking. Completion anticipated by 2011.

Cost of completion \$2m

Total Cost at Completion \$11m



*Site progress  
February 2008*





# OUR PROGRAMS

The Complex will provide immediate training and employment for young people as services and programs are brought on line and developed.

## HOW WE WORK

---

- Listening to our young people
- Offering a comprehensive range of opportunities to young people
- Counselling and clinical programs, especially for young men
- Educational and social support programs for youth
- Recreational, sport and community programs
- Keeping in touch with our youth
- Recognizing and accrediting achievements of young people
- Building supportive communities
- Connecting with other organizations and building on any existing initiatives

The Dunn & Lewis Youth Development was established to provide opportunities for young people to develop personal attributes, moral standards and work skills to the best of their abilities, and to thus enable them to have a full and rewarding life of participation within the community.

All programs currently provided are sponsored, however the long term object is for the Foundation building to provide a self-generating source of income to support all of the youth programs.

The Foundation will eventually be totally self-funded, thus unique within Australia.

Even though the Complex is not completed, programs have been running since 2006 and are being progressively developed and improved. The programs are being run with the help of TAFE, various youth camps, the local High School, DOCs, Juvenile Justice Youth Department, Youth Crises Housing, YMCA, Shoalhaven Youth Services, Shoalhaven Mental Health and employment agencies. Once the building is completed the courses will be conducted at the Foundation Complex.

Over the past year the Foundation has been limited in providing assistance to youth, due to difficulty in finding venues and limited available funds. However considerable time has been spent in research, locally, nationally and internationally to ensure the services provided are world-class and relevant to the needs of youth of today.

## PROGRAMS DELIVERED BY THE FOUNDATION

---

### **Girls Self Esteem Course November 2006**

Girls Self Esteem Course conducted by Penny Pennington, a Diverse Therapist and run in conjunction with Ulladulla High

School. 12 girls, age 15-17, from Ulladulla High School participated in this course. A follow up camp was then held in March 2007, at which time an evaluation of the girls' progress was conducted. All the girls remained in the school system to finish Year 12.

### **Self Development Course December 2006**

A Self Development Course was run by Mary Louise Parkinson, at which 10 girls, aged 14-16 received certificates of attendance at the completion. This course involved developing the girls' skills in deportment, behavior, presentation of themselves and speaking in formal situations. The girls who attended this course found it to be very informative and learnt very important skills for use in their future.

### **OH&S Certificate February 2007**

A Green Card Course was held for 10 boys and 12 girls, aged 15-20. The 22 attendees all received an OH&S Certificate (Green Card), which prepared them for work in the Building Industry.

### **School Retention, Behavior Intervention Girls Camp February 2007**

Camp Chic (Behavior Intervention Camp) run by Willow Tree Training was held for 12 girls from Ulladulla High School. This camp was a 3 day camp for young women between the ages of 13-17 years who were at risk of leaving school. It provided gender based education in regards to risk taking and opportunities to enable participants to develop their own capacity in the following topics; drugs and alcohol, self esteem, body image, goal setting, careers, relaxation, problem solving and safe sex. A follow up and evaluation was completed 6 weeks later and all girls were keen to remain at school.

### **School Retention, Behavior Intervention Boys Camp March 2007**

Boys to Men Camp (Behavior Intervention Camp) was run by Willow Tree Training and was held for 12 boys, from Ulladulla High School. This camp was a 3 day camp for young men between the ages of 13-17, providing gender based education with the same scope as camp chic. A follow up and evaluation was completed 6 weeks later, unfortunately 2 of the 12 boys still ended up leaving school. The others were keen to finish school.

### **Mentors Course June 2007**

A Mentors Course was run in conjunction with Illawarra TAFE with 22 adults participating in this course. The adults were community based youth operators who wanted to upgrade skills. All participants passed and received certificates. These participants are all prepared to provide counselling for the Dunn & Lewis Foundation.

*Certificate presentation  
Mentors course 2007*



## **Video Making Course June 2007**

A Video Making Course was held for 12 young people (3 girls and 9 boys aged 16-18). All completed the course and received Certificates, with 3 obtaining employment in that area.



*Daryl, Shane and Chris at Video Course*

## **Work experience training July 2007**

Work experience training was conducted in conjunction with Juvenile Justice with 3 boys aged 16, receiving on site experience in the Construction Industry.

## **Mentors Course August 2007**

Another Mentors Course was run in conjunction with Illawarra TAFE with 18

adults participating in this course. The adults were community based youth operators who wanted to upgrade skills. All participants passed and received certificates. These participants are all prepared to provide counselling for the Dunn & Lewis Foundation.

## **OTEN Course August 2007**

An OTEN Course run in conjunction with the Youth Centre with 6 young people (4 boys and 2 girls, aged 13-16) attending.

The course taught basic learning skills in preparation for the School Certificate.

## **Events Management Course August 2007**

The Events Management Course was attended by 2 boys and 10 girls aged 15-16. This is a two part course teaching basic skills in event and conference management. Students will receive certificates of attendance on completion of the course in November.

## **Work experience August 2007**

In conjunction with Ulladulla High School two 17 year olds boys were given on the job work experience at the Foundation building site, which goes towards their School Certificate.

## **FUTURE PROGRAMS**

---

This year and continuing into the future, mental health issues will be a major focus, we will be preparing counselling services and working towards a trauma retreat service.

### **Certificate II in Construction**

This course will be held for 16 young people from Ulladulla High School in conjunction with Illawarra TAFE and will include ongoing work experience at the Foundation work site.

### **Youth Potential**

Funding has been received to run four 6 week courses called Unlock Your Potential to be held for boys and girls aged between 14 and 16 at risk of leaving school. This course will be run at the local Youth Centre.

### **OH&S**

A course for 16 young people in OH&S is planned for early in 2008. It is expected that this course will be run repeatedly as the need arises educate more young people in OH&S for job placements.

### **Youth Support**

Two grief and loss workshops will be run by Julie Dunsmore from Royal North Shore Hospital. One workshop is for trained professionals, the other a Youth workshop to determine the services that would benefit the needs of youth today. Mentors will be trained to provide ongoing Support for youth. Julie Dunsmore will also assist in setting up the Youth Support System councillors.

### **Live Your Best Life**

Federal funding of \$180,000 has been received for the publication of a booklet called Live Your Best Life. This is a two year program for the whole community from youth to the aged, to encourage people to participate in sports and activities. Young people will produce the magazine.

## Work Experience

The Foundation will continue working with the Juvenile Justice System to run a number of work experience programs.

## Business Skills

A workshop on Financial Education is planned in conjunction with the YMCA, to be held at the Shoalhaven Anglican School. This will evolve into work experience for the youth participating.

## OTHER PROGRAMS

---

- Trauma Retreat. Initiation of a National Trauma and Grief Management Retreat
- Leadership. Youth international leadership through HOBY International training framework
- Exchange Programs. Create national and international ties and exchange programs
- Commencement of Betty Ford programs. Early intervention programs for 8 year old children to teen youth.
- Unite the disparate youth programs and fluctuating needs locally and nationally
- Link the youth learning initiatives with Australian Business imperatives
- Facilitate cross-generational activities and skills
- Foster sports participation and entertainment excellence
- Provide technology to actively respond to changing needs for the complex and programs that reach out around Australia

## OFFERING YOUNG PEOPLE COMPREHENSIVE OPPORTUNITIES

---

- Grief and Loss counselling
- Traumatic events debriefing and counselling
- Social skills groups
- Adolescent mental health counselling and referral
- Alcohol and other drug programs e.g.; Betty Ford Clinic
- Social/Educational services

## RECOGNIZING AND ACCREDITING ACHIEVEMENTS OF YOUTH

---

- The Dunn and Lewis centre is committed to recognising and rewarding the achievements of everyone who participates in its programs and activities.
- Wherever possible this recognition will take the form of a nationally accredited certificate or diploma which will comply with the Australian qualifications framework.

## FOLLOW-UP TO PROGRAMS

---

The Dunn and Lewis Youth Development Foundation recognizes that youth programs offered in isolation are of limited value in the long term.

Our assessment and case management plans are designed to ensure continuity of service and to ensure that activities that are offered are appropriate to the needs of the individual involved.

The case plan also specifies program evaluation and follow up methods

We will not train young people then leave them to their own devices to be successful or fail alone. We will offer an ability to continue involvement in their lives and assist them over any new hurdles that arise.

## FUNDRAISING ACTIVITIES

---

### Fundraising for 2008-2009

The Dunn and Lewis Youth Development Foundation fundraising activities have gained momentum over the past 12 months. To maintain this momentum a calendar of fundraising activities has been drawn up that runs throughout 2008-2009.

The Foundation will inform and engage the public by including activities with local clubs, businesses and organizations and maintaining regular media coverage to keep the project on the community radar.

Media coverage will play a vital role in moving the project forward and a media plan has been developed for 2008-2009.

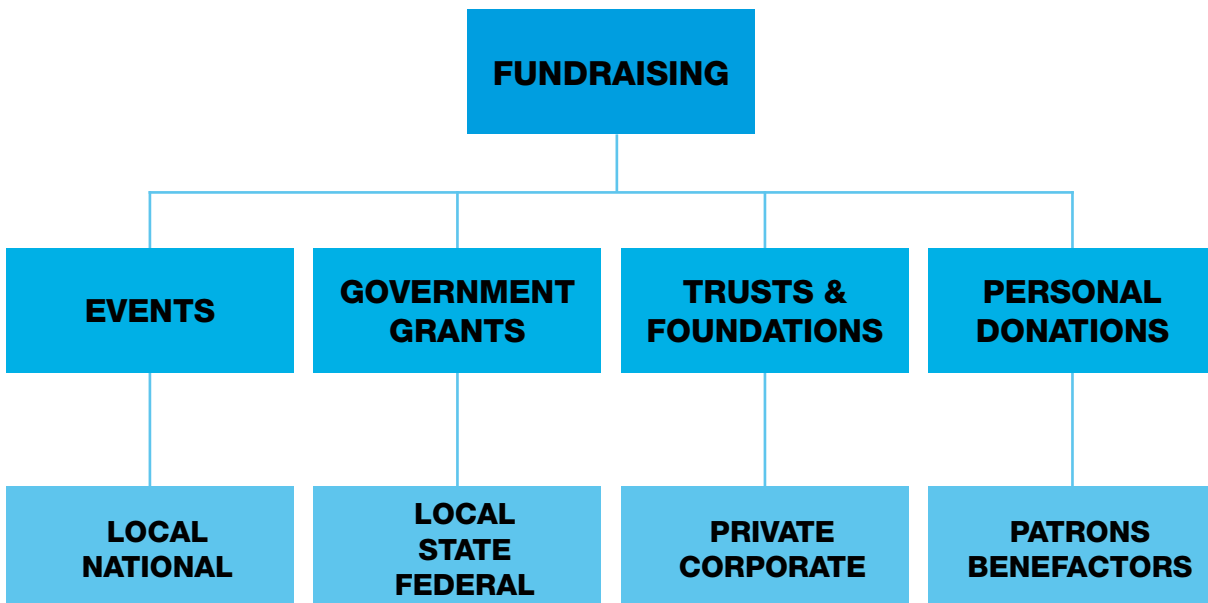
Donations will be sought widely via trusts, foundations, and government sources.

A fundraising committee of 12 influential supporters who have expertise and contacts in specific areas has been set up.

Our Ambassador Angry Anderson will approach individuals and raise the Foundation profile through the media.

All trust and foundations that fit our criteria will be approached.

A workshop on other Fundraising possibilities will be held early in 2008.



A target of \$1.5m per year is required to meet the current plan.

## COMMUNITY SUPPORT

---

The Community has raised funds and every profession and trade has pledged support, or already donated their time and labour. It is essential this complex is built for the future of our children and families as boredom is leading to many social problems and our youth are losing the ability to socialize. In addition, the importance of a family unit is diminishing as we communicate less.

### **Extreme Demand**

There is a group of highly qualified people helping the Foundation through every phase of this project. Surveys and reports have been done which show there is a great demand for this venue on the South Coast as there is a visible and critical lack of these facilities in regional Australia.

### **Opportunities**

The Centre will be a hub for local information and educational training, with opportunities for country and remote kids to visit the coast. The complex will host inter-school competitions and sporting events including Championships. The Centre will be the focal point for the programs that will consolidate with its completion.

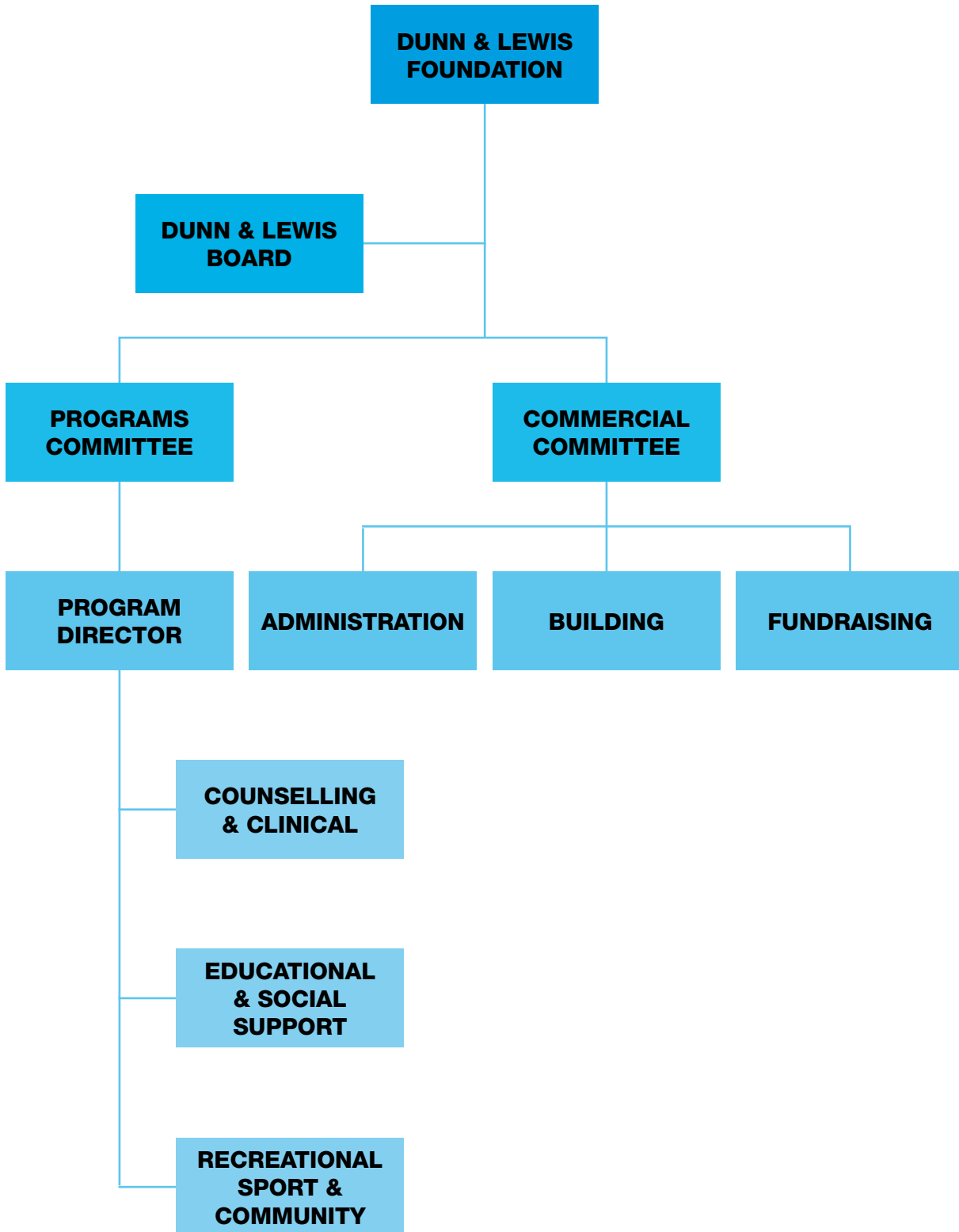
### **High Returns**

Experts in bowling, entertainment, gymnastics and catering have given us financial projections which show the complex will make money while providing employment in the region. All profits will be put back into community projects.

### **Successful Results**

There is a shared burning desire to see this project become extremely successful not only for the memory of Craig Dunn and Danny Lewis but for the future generations of young people to learn how to interact appropriately with community members, learn self respect, develop leadership and social skills which are sadly lacking in today's society.

# FOUNDATION STRUCTURE



# 8

## CONTACT



*Surf competition to raise funds March 2007*

## DUNN & LEWIS YOUTH DEVELOPMENT FOUNDATION

The Dunn & Lewis Youth Development Foundation Ltd  
ABN 38105461925

Ph 0408540684 fax 0244540684

[www.dunnlewisfoundation.org.au](http://www.dunnlewisfoundation.org.au)

### CONTACT DETAILS

---

|                 |                                                                      |             |
|-----------------|----------------------------------------------------------------------|-------------|
| Email           | <a href="mailto:dunno@shoalhaven.net.au">dunno@shoalhaven.net.au</a> |             |
| Street Address  | 48 St Vincent St Ulladulla 2539                                      |             |
| Postal Address  | PO Box 373 Ulladulla 2539                                            |             |
| Complex Address | corner Parson & St Vincent Streets Ulladulla 2539                    |             |
| Directors       | Gayle Dunn                                                           | 0408540684  |
|                 | Kevin Whitford                                                       | 0244551369  |
| Site Manager    | Dick McLean                                                          | 02 44557725 |